



## **Proctoring Best Practices for ALEKS PPL**

McGraw-Hill Education / ALEKS

NCTA 2017

September 14, 2017

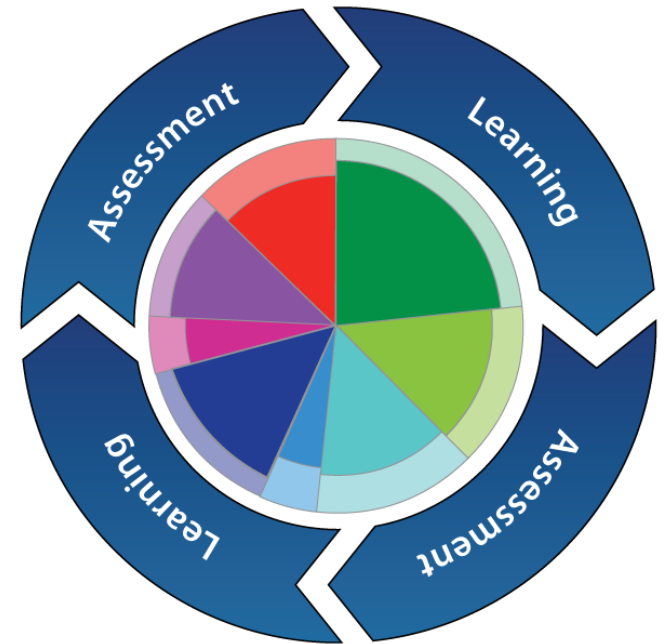
A photograph of three young adults sitting on a grassy lawn in front of a modern building. A woman with red hair in a red tank top sits on the left, a man with curly hair in a light blue shirt sits in the middle, and a man with dark hair in a grey t-shirt and khaki shorts sits on the right. They are all smiling and looking at each other. There are several books and papers on the grass in front of them, and a green backpack is on the left. The text 'The Story of ALEKS' is overlaid in white on the center of the image.

# The Story of ALEKS

- Developed from research at New York University and the University of California, Irvine, by a team of software engineers, mathematicians, and cognitive scientists
- With the support of a multi-million-dollar grant from the National Science Foundation.
- At the heart of ALEKS is an artificial intelligence engine that assesses each student individually and continuously.
- ALEKS is based upon original theoretical work in a field of study called **Knowledge Space Theory**.



A = Assessment  
LE = Learning  
KS = Knowledge Spaces







**ALEKS for Math Placement**

# The Importance of Math Placement

- Gate-keeper course for STEM majors
- Reduce time in developmental math and time to graduation
- Reduce the consequences of students under- and over- placed
- Decrease Drop/Fail/Withdrawal (DFW) rates
- Course failure means loss of full-time status, financial aid, tuition, and confidence
- Course failure or major scheduling and resource changes mean increased institutional costs

# What does ALEKS PPL include?

- A single solution that combines up to 5 placement assessment attempts with access to an individualized Prep and Learning module.
- Each assessment places from Basic Mathematics to Calculus I
  - Assesses across 314 math topics in 30 questions or less
  - All open response questions
  - Allows for five attempts over 12-months
- Prep and Learning Module provides the opportunity to review
  - Based on results of initial assessment which identifies each student's knowledge state
  - Individualized, mastery-based learning motivates students to achieve higher placement results
- Individualized and detailed skill diagnostic and detailed reporting capabilities

## A Web-based System

- ALEKS PPL is a Web-based program.
- Programmed in HTML5
- There are no special “plug-ins” required.
- ALEKS Uptime – 99.98%
- Students can access their ALEKS PPL account from a computer or hand-held device with Internet access.



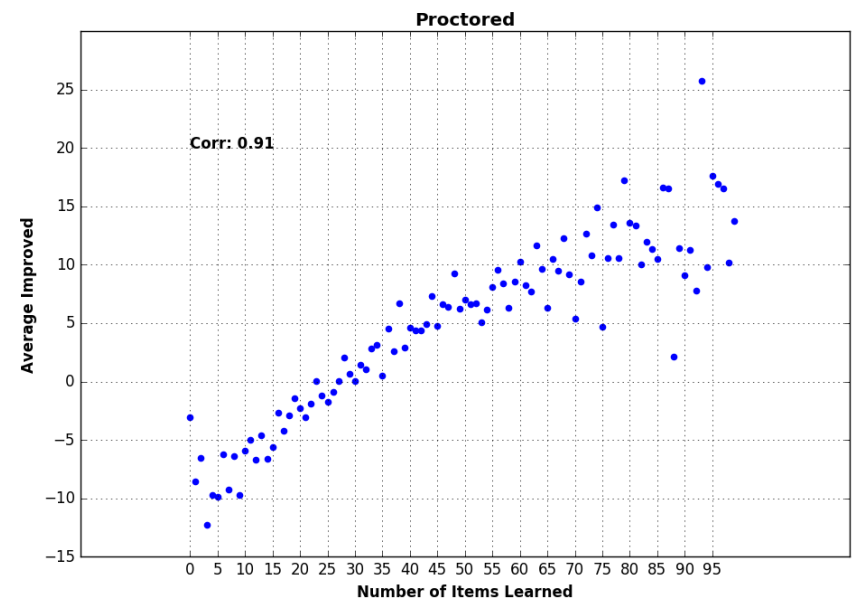
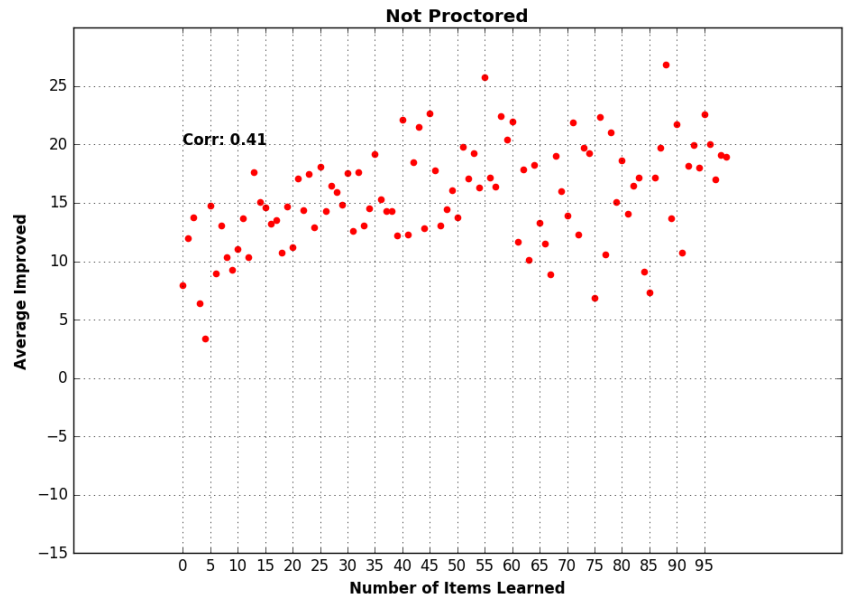
# Systems Integration

- ALEKS PPL data can be transferred to your school's enterprise information system.
- The ALEKS IT team will partner with your institution's IT team to transfer ALEKS PPL data and to create a Single Sign On process.
- For data security, ALEKS is an InCommon Federation approved corporation. We can transfer data via Shibboleth or a custom API.

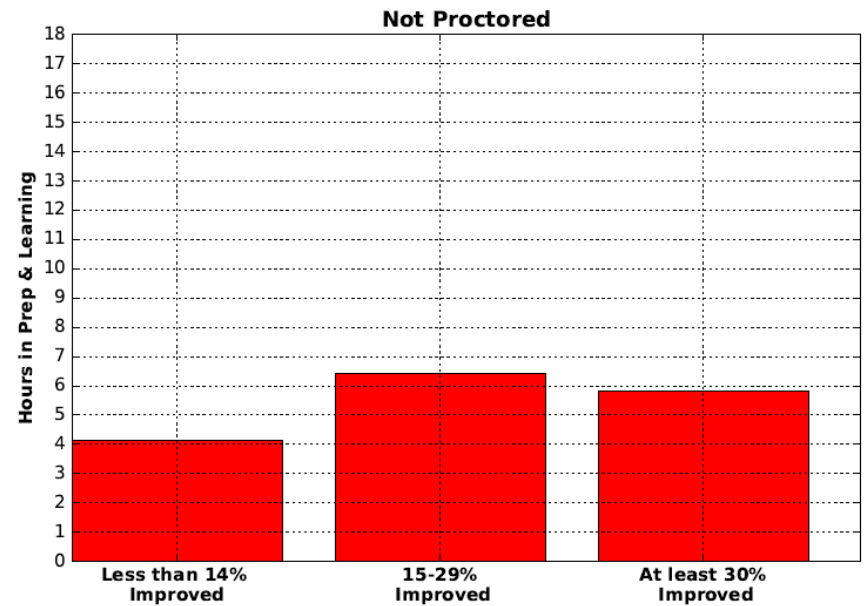
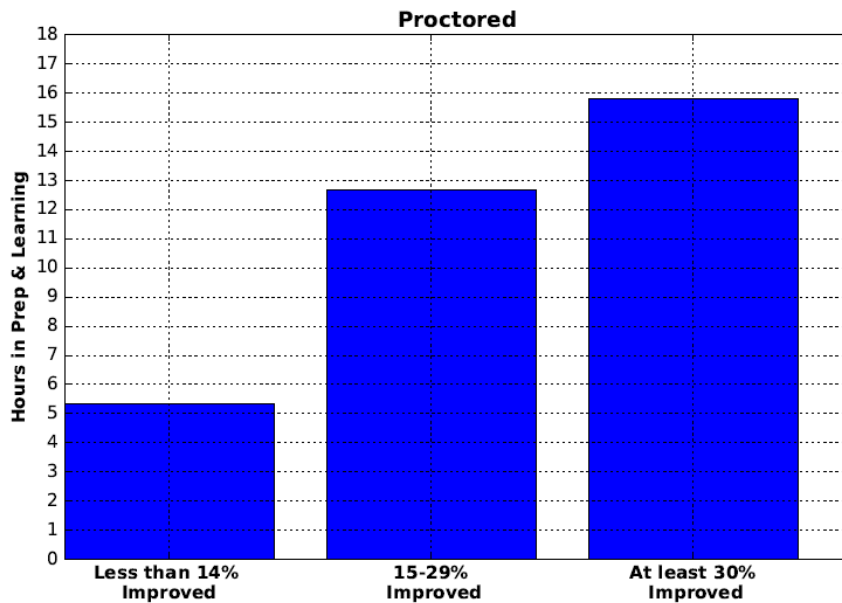
A young woman with long dark hair and glasses is sitting at a wooden desk in a library. She is smiling warmly at the camera while holding a blue pen over an open notebook. The background is filled with bookshelves containing many books. The text 'Research on Proctoring' is overlaid in large white font across the center of the image.

# Research on Proctoring

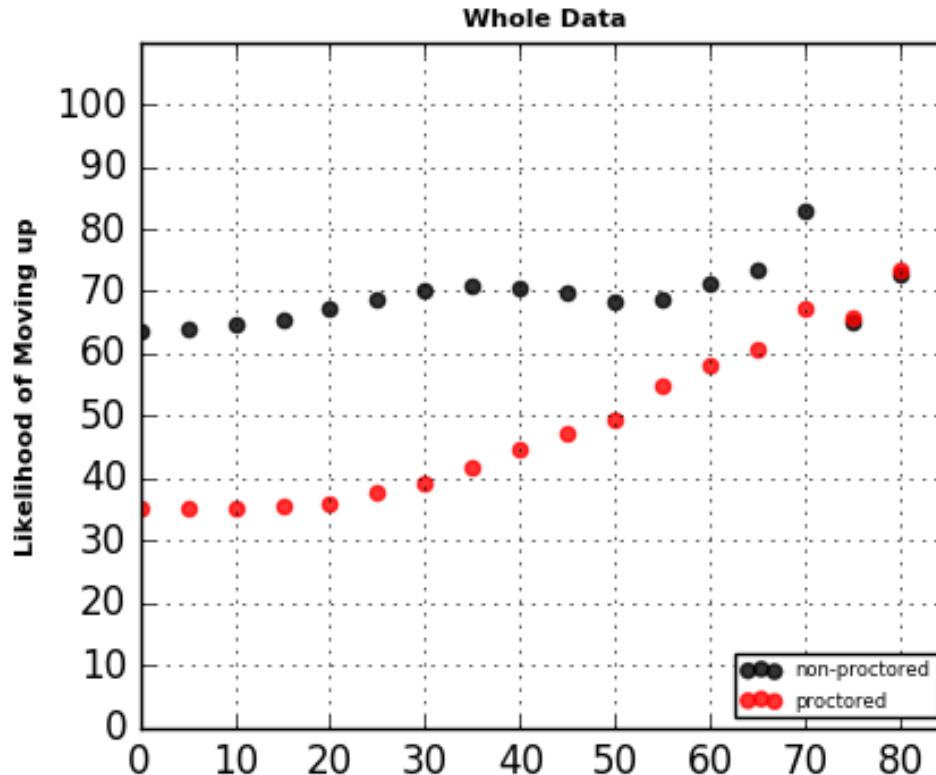
# Score Improvement Vs. Topics Learned

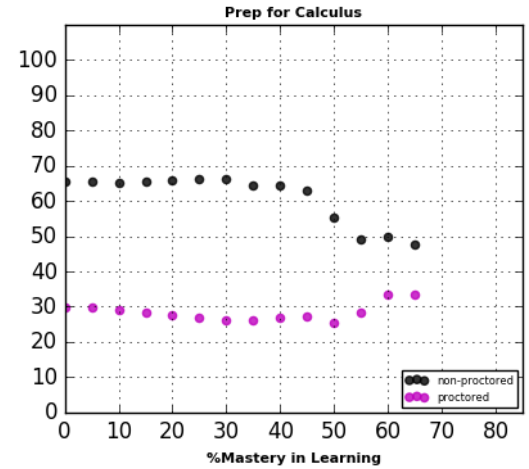
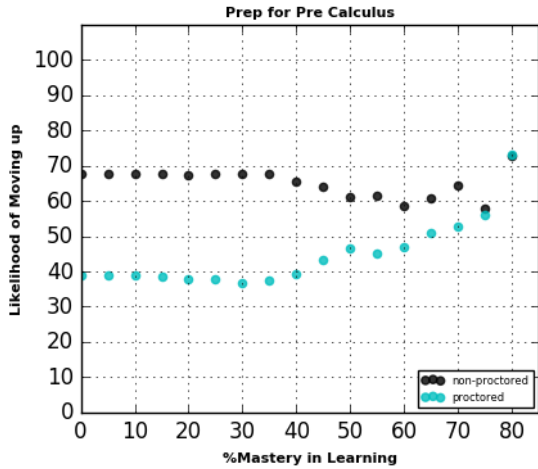
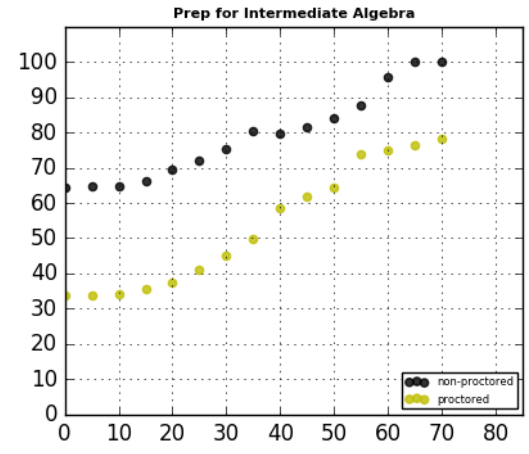
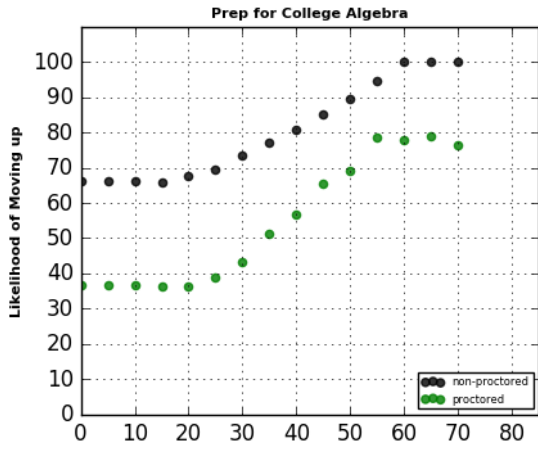
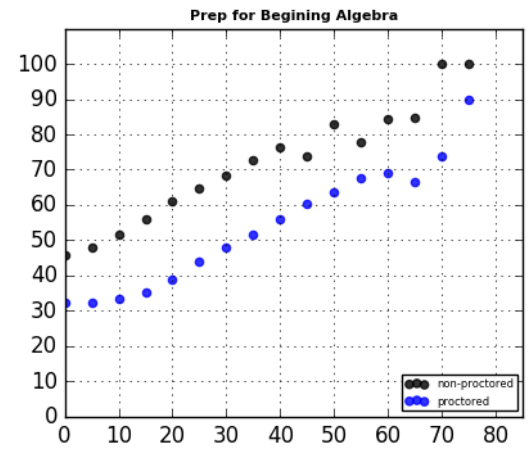
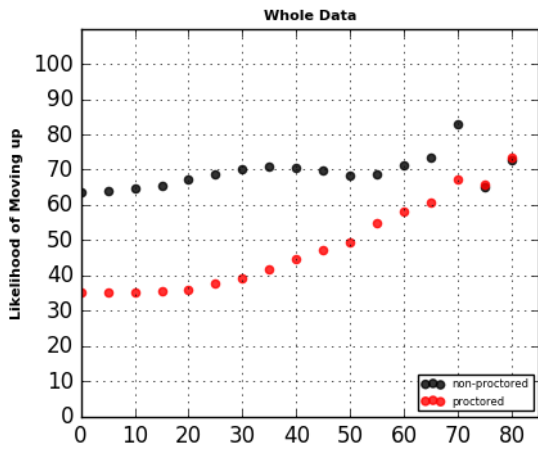


## Average Hours in Prep & Learning vs. Improvement in Placement



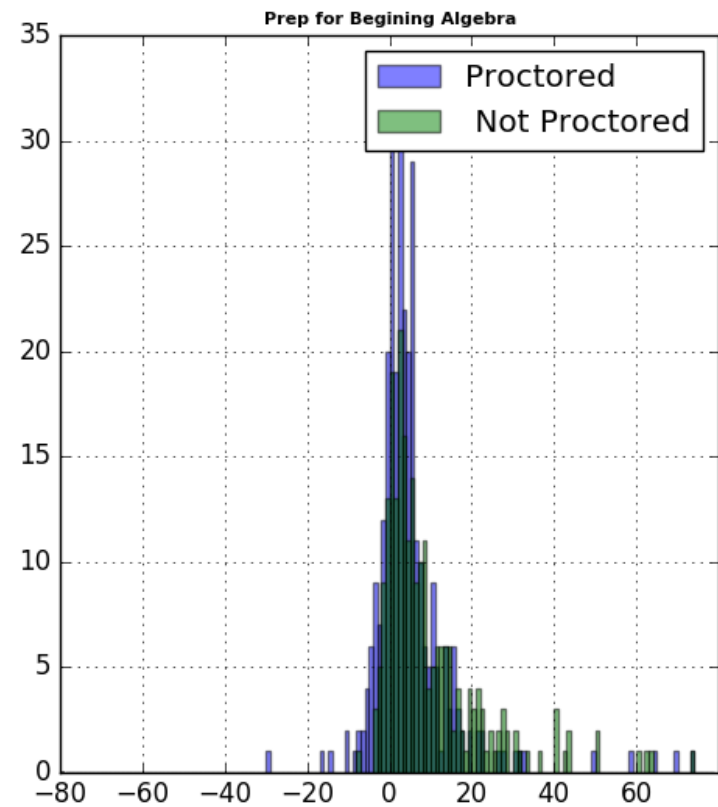
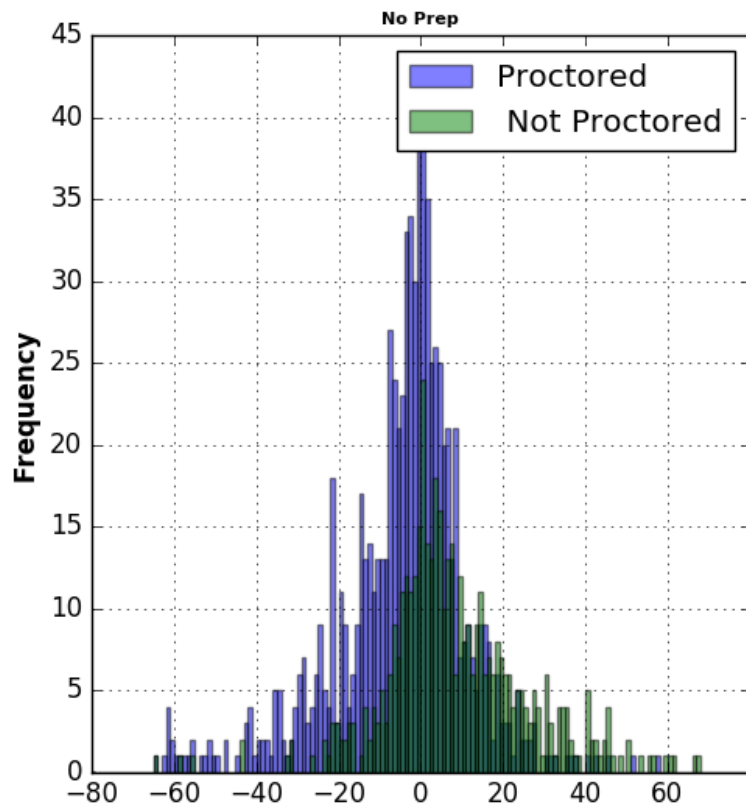
# Course Placement Improvement vs. % Mastery in Learning Module



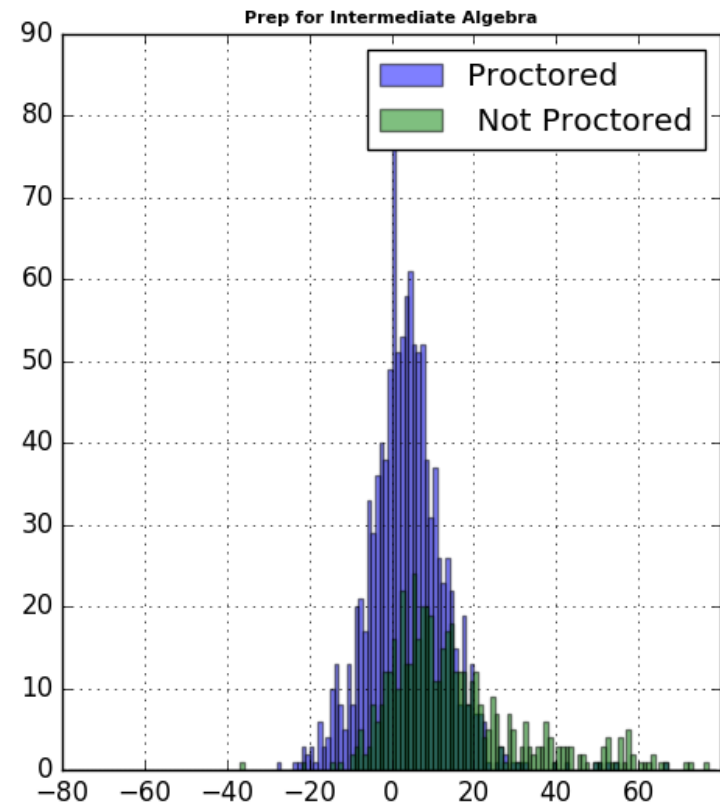
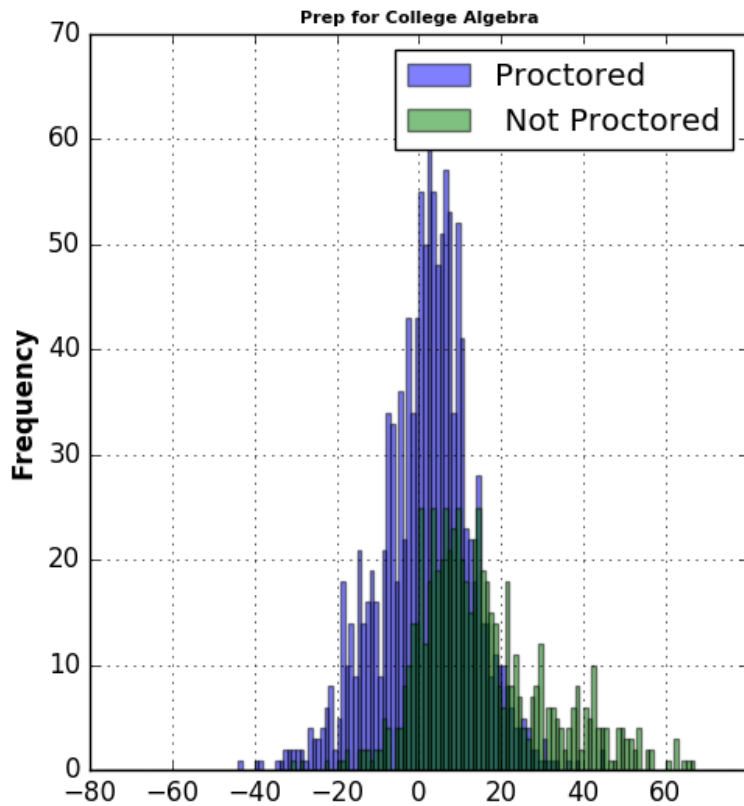




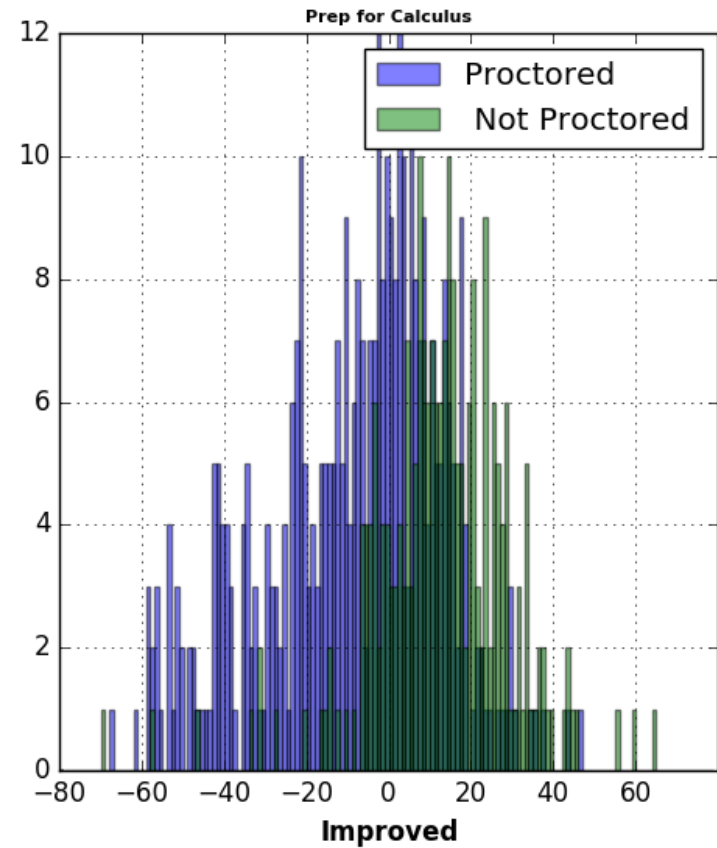
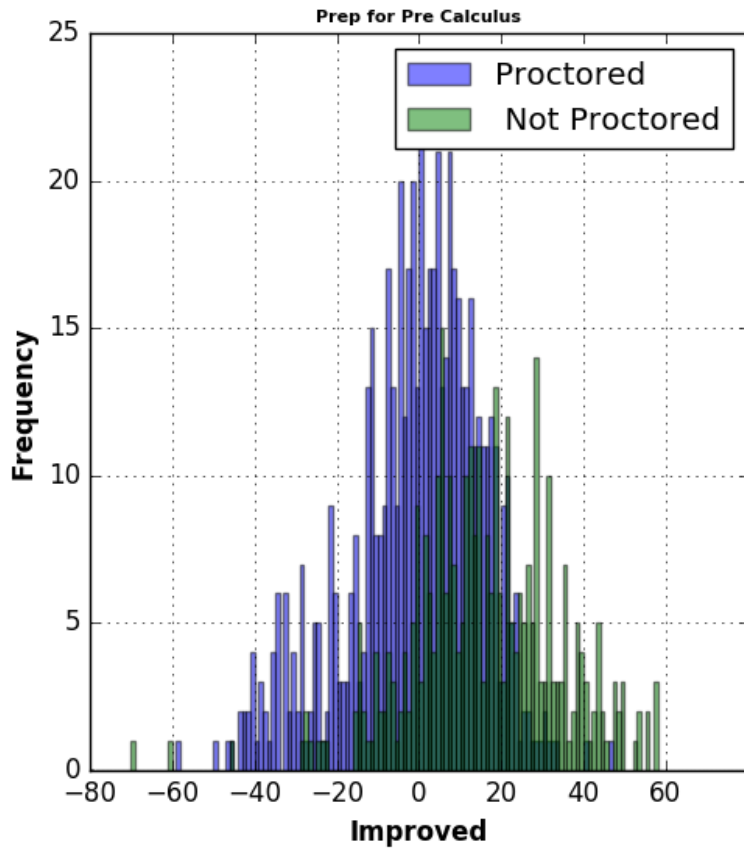
# Distribution of Improvement



# Distribution of Improvement



# Distribution of Improvement



A woman with short brown hair, wearing a dark blue patterned top, is sitting at a table in a restaurant. She is smiling and looking towards the right. She is holding a smartphone in her hands. The background is a blurred restaurant interior with warm lighting and other people in the distance.

# Best Practices

## Policies for a Successful Placement Program

- ALEKS PPL is used as the sole measure of placement for students.
- No additional measures are used to place students, such as SAT, ACT, GPA, or another placement exam.
- All students taking a math course up to Calculus I (and requiring placement under state or local regulations) would utilize ALEKS PPL.

## Proctoring Best Practices

- In person or remote proctoring are always ideal
- Allow students to use the first assessment as a “practice” attempt so they become familiar with the system.
- Create a low-stakes environment. Communicate the benefit of taking it seriously and emphasize they have more than one chance.
- Have a policy in place should you suspect academic dishonesty.



A photograph of three young adults sitting on a grassy lawn in front of a modern building. A woman with long red hair, wearing a red tank top and dark pants, sits on the left. A man with curly brown hair, wearing a light blue button-down shirt and dark pants, sits in the middle. A man with dark hair, wearing a light blue t-shirt and khaki shorts, sits on the right. They are all smiling and looking at each other. There are several books and papers on the grass in front of them, and a green backpack is on the ground to the left.

# New Partnerships

# Partnership with proctor<sup>u</sup>

- Officially partnered with ALEKS PPL
- Largest online proctoring company in the industry
- Trusted by over 1,000 institutions
- Over 3,000,000 exams proctored
- Over 1 million users
- US Patent No. 9,601,024
- Proctored in 129 countries
- Offering special pricing for ALEKS PPL

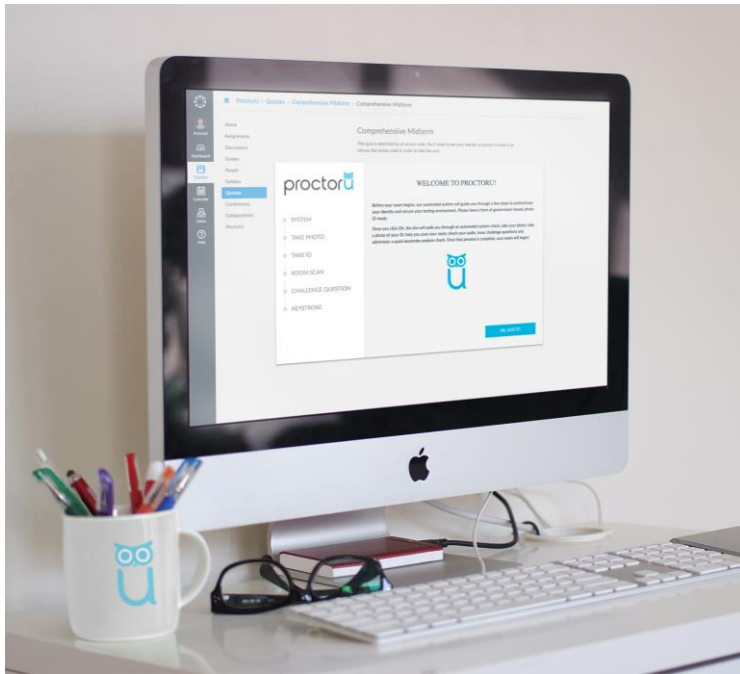


# ProctorU Live Proctoring



- Live proctor launches session
- Scheduled or On-Demand access 24/7
- Multi-factor authentication
- Suspect behavior monitoring and notification
- Complete recording of test-taker screen and facial views
- Post-exam report within 24 hours
- 30 day video recording archive

# ProctorU Auto Proctoring



- Fully-automated from start to finish
- Scheduled or on-demand access 24/7
- Automated identification
- Multiple face recognition
- Eye movement tracking
- Light level and audio level tracking
- Complete recording of test-taker screen and facial views
- Video timeline with incident stamping for easy review
- Video reviews conducted by institution

## Coming in 2018 – Lockdown Browser

- Our development teams are working on integration with Respondus
- Available within ALEKS course or ALEKS PPL interfaces
- Respondus, Inc. develops assessment applications for the eLearning market.
- Thousands of instructors at over 2,000 colleges and universities in over 50 countries use Respondus software to enhance the capabilities of their systems.

**Respondus®**

**Thank you!**

**Contact**

**[aleksppl.inquiry@mheducation.com](mailto:aleksppl.inquiry@mheducation.com) with  
any questions or for more information.**

**[www.aleks.com/PPL](http://www.aleks.com/PPL)**